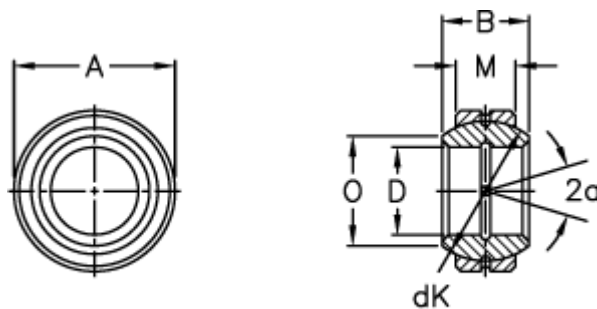


Article number: 03505110

Description: Fluro Rod end GE 110FO

Measures



Str. 6–12 uden smørerille

A = 180 0 -0,025

B = 100

D = 110 0 -0,020

dK = 160

Dynamic load C (kN) = 950

M = 70

O = 124.8

Static load C0 (kN) = 4750

Tilt angle = 12

Weight = 9600